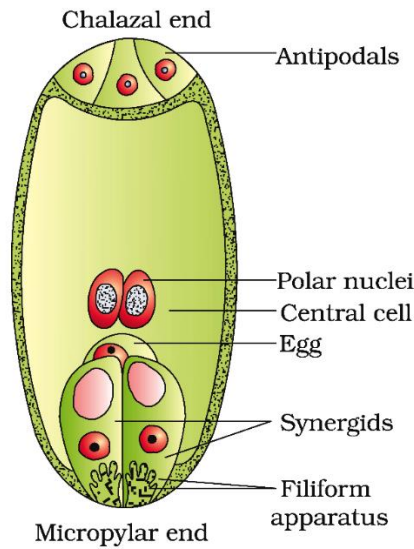
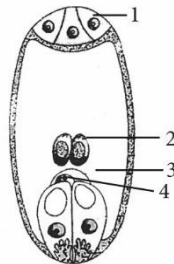


**2. A Diagrammatic representation of the mature embryo sac**



**Important questions based on it:**

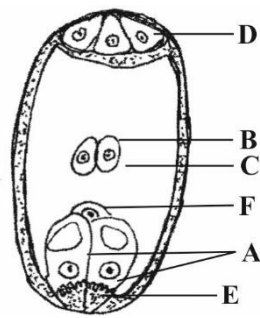
- A. Draw labelled diagram of a mature ovule and embryo sac with its contents. (2/5, Delhi 2013C)
- B. Draw the labelled structure of mature embryo sac. (AI 2013C, 2/5, Delhi 2007)
- C. In the given figure of embryo sac label the parts (1), (2), (3) and (4).



- D. Draw a diagram of a mature embryo sac of an angiosperm and label the following parts in it.
  - (a) Filiform apparatus
  - (b) Synergids
  - (c) Central cells
  - (d) Egg cell
  - (e) Polar nuclei
  - (f) Antipodals

(3/5, Delhi 2013)
- E. Draw the labelled structure of mature embryo sac. (AI 2013C)
- F. How does the megaspore mother cell develop into 7-celled, 8 nucleate embryo sac in an angiosperm? Draw a labelled diagram of a mature embryo sac. (Delhi 2012)
- G. Draw the seven-celled structure formed and label all the different cells. (Delhi 2010C)

H.



In the diagram given above, parts labelled as 'A', 'B', 'C', 'D', 'E' and 'F' are respectively identified as:

- (a) synergids, polar nuclei, central cell, antipodals, filiform apparatus and egg
- (b) polar nuclei, egg, antipodals, central cell, filiform apparatus and synergids
- (c) egg, synergids, central cell, filiform apparatus, antipodals and polar nuclei
- (d) central cell, polar nuclei, filiform apparatus, antipodals, synergids and egg
- (e) filiform apparatus, polar nuclei, egg, antipodals, synergids and central cell.

(Kerala PMT)