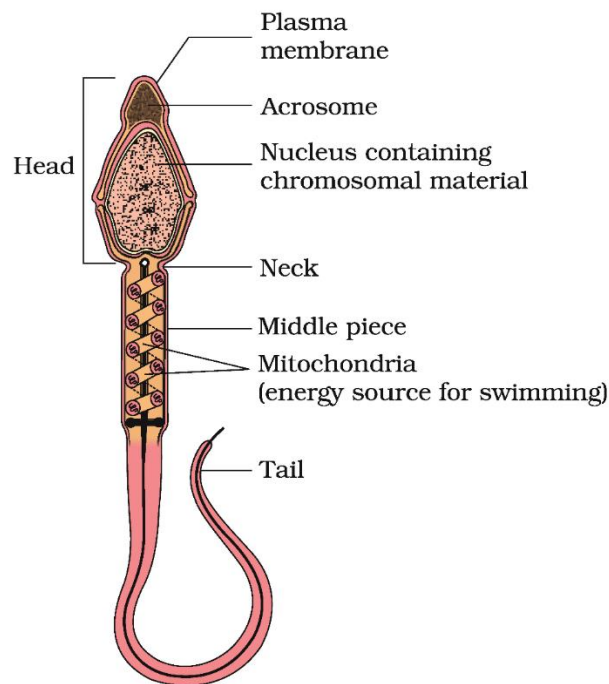


3. Structure of a sperm



Important questions based on it:

- A. Draw and label the parts of the head region only of a human sperm. (AI 2014C)
- B. Draw a detailed structure of a human sperm. Label the cellular components. (2/5, Delhi 2013C)
- C. Draw labelled diagram of a human sperm. (2/5, AI 2013C, 2008C)
- D. Draw a labelled diagram of a human sperm. (Foreign 2015)
- E. Draw a diagram of human sperm. Label only those parts along with their functions, that assist the sperm to reach and gain entry into the female gamete. (Foreign 2014)
- F. Draw a diagram of the microscopic structure of human sperm. Label the following parts in it and write their functions.
- (a) Acrosome
 - (b) Nucleus
 - (c) Middle piece (Delhi 2013)
- G. Draw the diagram of a mature human sperm and label the parts that
- (i) helps it reaching to the ovum
 - (ii) providing energy for it to reach the ovum
 - (iii) helping it to gain entry into the ovum. (Delhi 2015C)
- H. Draw a labelled diagram of the microscopic structure of a human sperm. (Foreign 2011, Delhi 2009C, 2008)