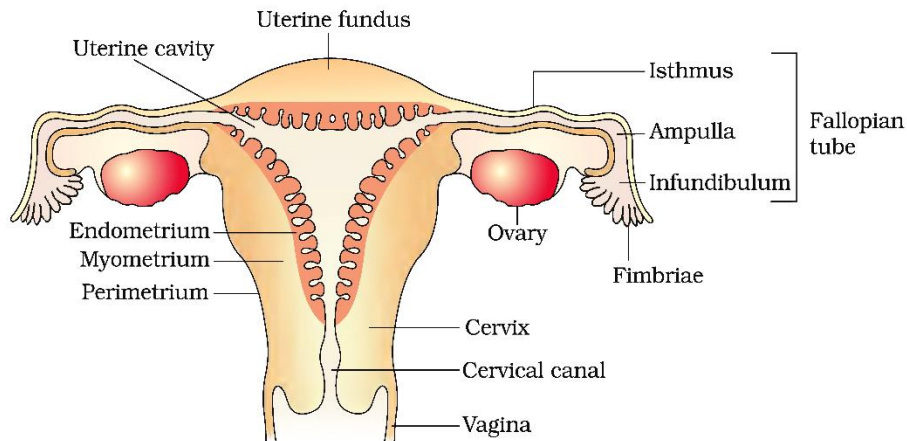
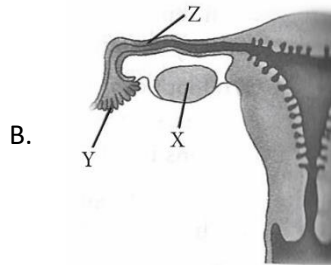


4. Diagrammatic sectional view of the female reproductive system

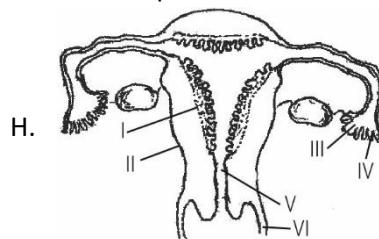


Important questions based on it:

- A. Draw a labelled diagram of the human female reproductive system. (2/5, Delhi 2011)



- C. The diagram above shows a part of the human female reproductive system.
- Name the gamete cells that would be present in 'X' if taken from a newborn baby.
 - Name 'Y' and write its function.
- D. Name 'Z' and write the events that take place here. (AI 2015C)
- E. Draw a diagrammatic sectional view of the female reproductive system of human and label the parts
- where the secondary oocytes develop
 - which helps in collection of ovum after ovulation
 - where fertilisation occurs
 - where implantation of embryo occurs. (3/5, Delhi 2013)
- F. Draw a labelled diagram of the reproductive system in a human female. (AI 2011)
- G. The figure given below depicts a diagrammatic sectional view of the human female reproductive system. Which set of three parts out of I-VI have been correctly identified?

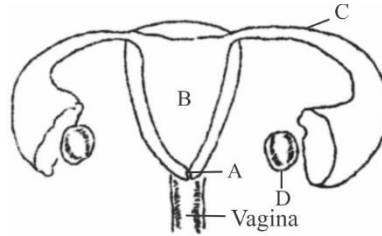


- (II) endometrium, (III) infundibulum, (IV) fimbriae
- (III) infundibulum, (IV) fimbriae, (v) cervix

- (c) (IV) oviducal funnel, (V) uterus, (VI) cervix
(d) (I) perimetrium, (II) myometrium, (III) Fallopian tube

(AIPMT Prelims)

H.



- (a) A – Oviduct, B – Uterus, C – Oviduct, D – Ovary
(b) A – Cervix, B – Uterus, C – Ovary, D – Tumor
(c) A – Uterus, B – Uterine cavity, C – Oviducal funnel, D – Ovary
(d) A – Cervix, B – Uterine cavity, C – Fallopian tube, D – Ovary

(Karnataka CET)