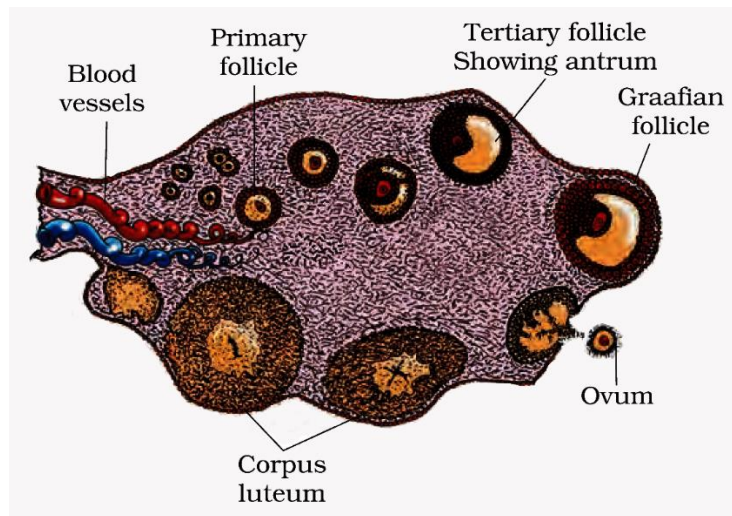


## 5. Diagrammatic section view of ovary



### Important questions based on it:

- A. Draw a diagrammatic sectional view of human ovary to show the development of follicles and ovulation. Label the different stages in the diagram.

*(3/5, Delhi 2010C, 2009, 2008)*

- B. Draw a sectional view of human ovary. Label the following parts:

- (i) Primary follicle
- (ii) Ovum
- (iii) Graafian follicle
- (iv) Corpus luteum

*(AI 2009C)*

- C. Draw a sectional view of human ovary and label the different follicular stages, ovum and corpus luteum.

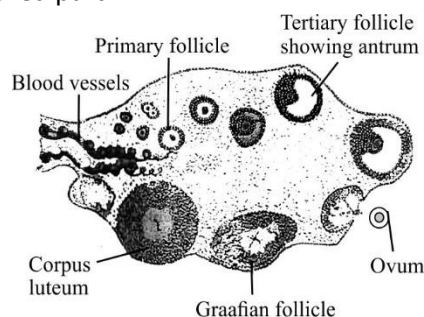
*(Delhi 2014)*

- D. Draw a transverse section of human ovary showing the sequential development of different follicles up to the corpus luteum.

*(AI 2014C)*

E.

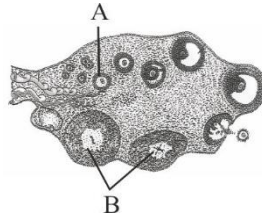
- F. Identify the wrongly labelled part.



- (a) Primary follicle
- (b) Ovum
- (c) Graafian follicle
- (d) Corpus luteum
- (e) Tertiary follicle.

*(Kerala PMT)*

- G. The figure shows a section of human ovary. Select the option which gives the correct identification of either A or B with function/characteristic.



- (a) B- Corpus luteum - Secretes progesterone
- (b) A- Tertiary follicle - Forms Graafian follicle
- (c) B- Corpus luteum - Secretes estrogen
- (d) A- Primary oocyte - It is in the prophase-I of the meiotic division.

*(NEET Karnataka)*